



Funded by 撥款資助機構



www.sie.gov.hk

Incubated by



# Drug IconCC

## Overview



**Pill Box**



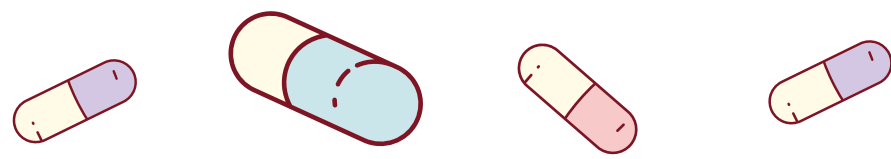
**Pill Bag**



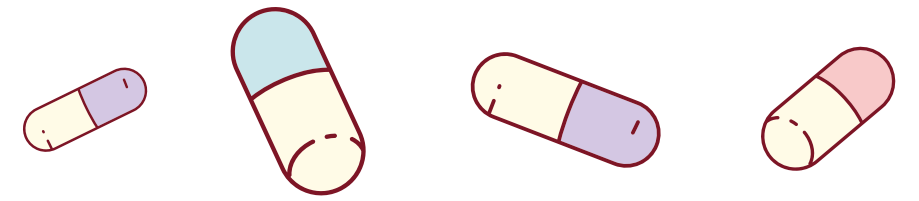
**Medicine Bottle**



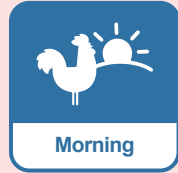
**From wordy drug labels  
to catchy drug icons**



# Drug Icons



## Dosing Schedule



Take medicine in the morning



Take medicine at noon



Take medicine in the evening



Take medicine before bedtime



Take medicine 30 mins - 1 hour before meals



Take medicine 30 mins - 1 hour after meals



Take as needed for related symptoms

## Dosage



Take 2 pills each time



Take 1 pill each time



Take half a pill each time



Take 1 teaspoon (5ml) each time

## Drugs Storage



**MUST** store in a cooler between 2°C and 8°C after opening



Store medicine in a cool and dry place

## Other Remarks



**CAUTION:** May cause drowsiness, do not drive or operate heavy machinery after taking medicine



**AVOID** using if pregnant, it may affect fetal development



**AVOID** staying outdoors for prolonged periods, use sunscreen if needed

## How to Use



**MUST** complete the whole course to avoid antibiotics resistance



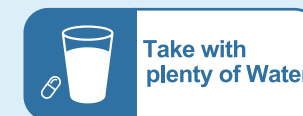
Shake well before use to ensure the correct amount of medicine applied



**AVOID** chewing or crushing, swallow the whole pill



Should **NOT** be taken with alcoholic drink



Take medicine with a large amount of water (at least 150ml)

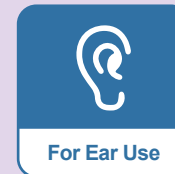


Chew well before swallow to fasten absorption

## Route of Administration



Place it into the eyes



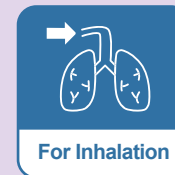
Place it into the ears



Place it into the nose



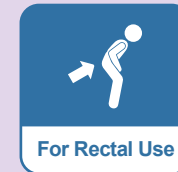
For external use only on the affected area



Inhale through the mouth and reach the bronchus to exert its effect quickly



Put them under the tongue until completely dissolved



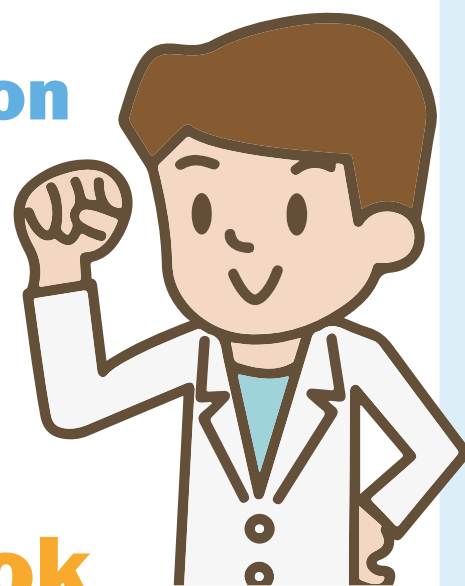
Put the suppository into anus with a finger for a depth of about 2 cm for babies and about 3 cm for adults



Put the suppository into vagina with a finger or an applicator

# To know more about

- 1 Details of Drug Icon CC
- 2 Medicine Information
- 3 Health Knowledge



# Like Us on Facebook



Drug Icon CC 藥物圖標

[www.drugicon.cc](http://www.drugicon.cc)

